

Grants to Charities and
Organisations

Wheelchair Sector Grant Programme

Guidance for Applicants

Introduction to Motability

Motability are a national charity that support the transport needs of disabled people. Our vision is that no disabled person shall be disadvantaged due to poor access to transportation.

Set up in 1977 Motability has been supporting disabled people with their transportation needs for more than 45 years.

In 2022 we are launching six new grant programmes to provide even more support to other charities and organisations in areas where our research and insight has shown opportunities to have the greatest impact for disabled people.

We are using £50million of the donation we received in 2021 to expand our support for charities and other organisations for the next three financial years ending March 2025.

Our new grant programmes have been designed to provide even more support to other charities and organisations. They will help to address the challenges that disabled people face accessing transport right now, while Motability continues its research and innovation work into longer-term solutions to make all transport accessible.

The first two new grant programmes, Community Transport, and Wheelchair Sector are launching on 1 April 2022 with the remaining programmes launching throughout the year. More information on these programmes will be provided when available.

Motability is committed to our vision, that no disabled person shall be disadvantaged due to poor access to transportation. This includes all disabled people in need of assistance with their personal transportation, not just disabled people who choose to use the Motability Scheme.

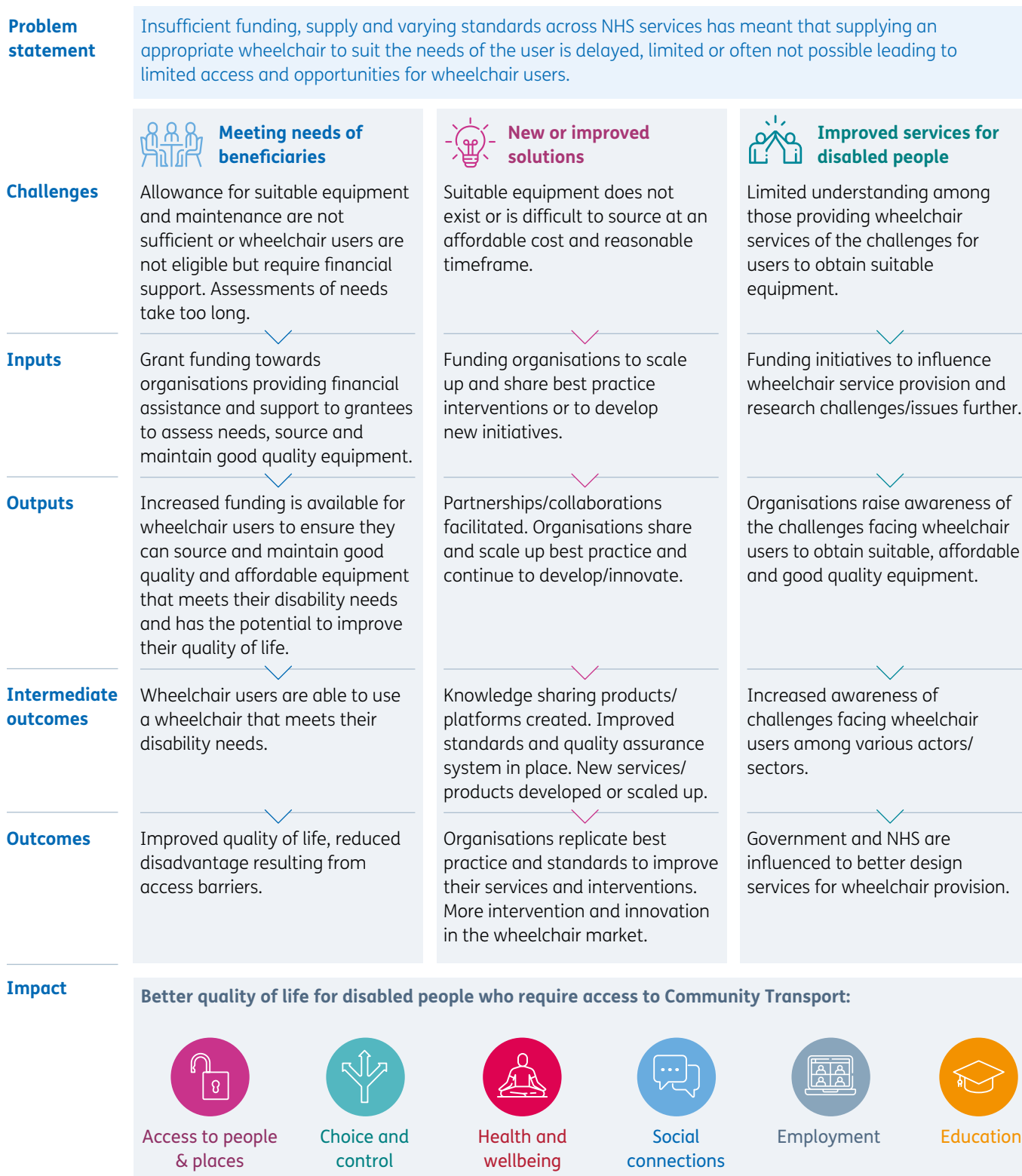
About this programme

Through this new grant programme we hope to help charities and organisations to make an immediate impact for disabled people by awarding funding to improve and expand their access to good quality, affordable wheelchairs.

Through an extensive programme of research and engagement, Motability have identified three **Routes to Impact** in the Wheelchair sector which we are seeking to support with grant funding. The framework below identifies these Routes to Impact, and outlines how improvements in these areas can benefit disabled people.



Wheelchair Sector Grant Programme Routes to Impact



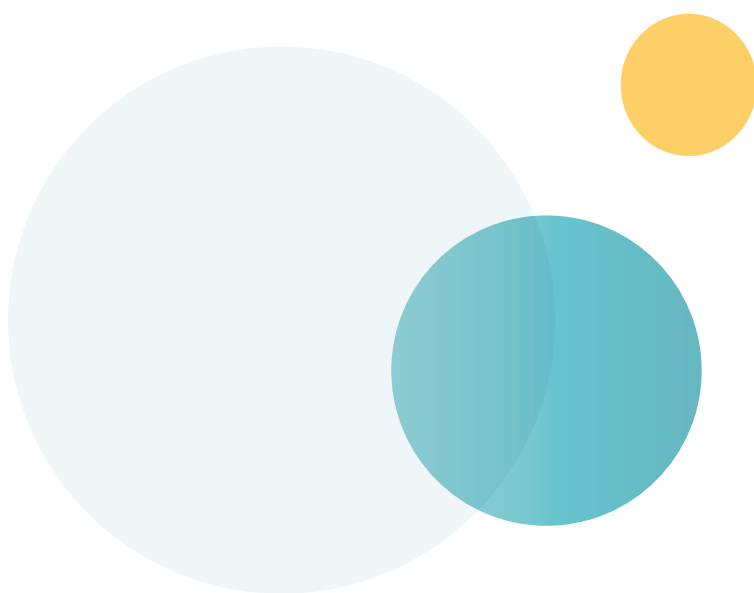
The above diagram explains Motability's key outcomes of the Wheelchair Sector Grant Programme. For further details please see below.

We believe that targeted support in these areas has the greatest chance of delivering meaningful change for disabled people, and supporting Motability's key outcomes of:

- **Access** – Increased ability to access people and places using transport
- **Choice and Control** – Improved independence and control to make decisions
- **Connect** – Increased social connections and relationships
- **Education** – Increased ability to access education and training
- **Work** – Increased ability to work and pursue a career
- **Wellbeing** – Improved sense of health and wellbeing

These Routes to Impact have been developed following an extensive programme of research and stakeholder engagement across the sector. Grant-funding available through this programme will focus on these areas. If you are considering submitting an application for funding that seeks to deliver impact in other ways then it is unlikely to be supported.

If you have any questions then please contact a member of the team via the [Wheelchair Sector Grant Programme page of our website](#).



What funding is available?

Motability has announced its intention to award £50 million in Grants to Charities and Organisations over the next three years. A portion of this has been allocated to the Wheelchair Sector Grant Programme.

Grant Value – The minimum grant value for this programme is £100,000, and the maximum grant value is £4,000,000. This can be split over one, two or three years. For example you may apply for £102,000 in total over three years which would be £34,000 per annum.

Please note that the final date for grant payments is the conclusion of the three year funding period on 31 March 2025. Requests for funding with payment date/s after this point will generally not be accepted.

What can be funded?

- Continuation funding for schemes, programmes and initiatives that already exist, and who provide best practice solutions, but need further support to remain operational or scale up the service they can provide to help more disabled people.
- Staff or volunteer training and costs.
- Funding to increase the number of vehicles available in the community to help organisations support disabled people.
- Full cost recovery grants which includes indirect costs.
- Local, regional, or national initiatives to increase awareness of wheelchair service provision and research challenges/issues further.

Priority will be given to organisations who:

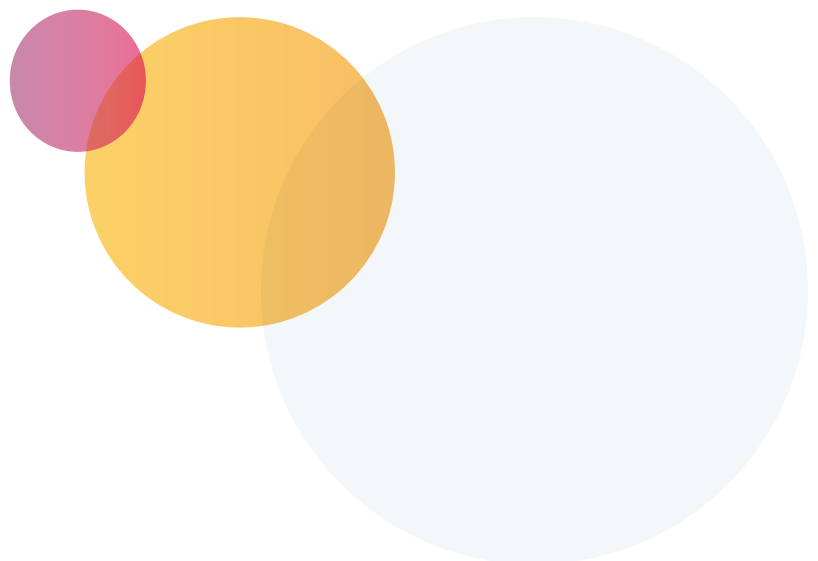
- Have well-established ways of working that make a demonstrable difference to the lives of disabled people.
- Are making both an immediate and longer term impact on the lives of disabled people.
- Can demonstrate that their application takes into account the views and needs of their beneficiaries and that they will continue to be involved during the delivery of the work.

Who can apply?

Motability wants to support medium or large charities and organisations with well-established ways of working.

We ask that Applicant organisations meet the following criteria:

- You are an incorporated organisation, overseen by, and subject to the rules of a regulator such as the Charity Commission, or Companies House. Organisations should have a charitable purpose and undertaking research to support disabled people with their transport needs.
- You have been active for at least three years.
- You have had an annual income of at least £150,000 per annum over the last three years.
- You hold reserves equivalent to at least three months of operating costs. Motability will not generally award a Grant to Charities or Organisations holding more than 12 months of operating expenditure in reserves.



What cannot be funded?

While Motability aim to support as wide a range of applications as possible within this space, there are some things we are not able to award grant-funding for. These include:

- Grants to statutory bodies, hospitals, or health authorities. Grants are also not available to charities and organisations based, or solely working outside of the UK.
- Grants to political pressure groups, or organisations primarily engaged in political activity.
- Grants to projects or services that proselytise a specific ethical or religious belief, and/or charities and organisations that exclude individuals that do not hold a specific ethical or religious belief.
- Construction projects and/or building works.
- Social investment or venture philanthropy.
- Retrospective funding of services or activities.
- Sponsorship for any individual, group, or company.
- Overseas travel.
- Medical care or medical research.
- Applications for activities or services unrelated to transport for disabled people cannot be supported by Motability.

How do we assess applications?

Motability has a two-stage application process for all Grants to Charities and Organisations. Having spoken to both grant-makers and grant-recipients across the charity sector we recognise the enormous commitment of time and resource associated with applying for grant-funding.

Motability's application process is designed to minimise the effort of applying for grant-funding as much as possible, while ensuring that we gather the information we need to make an informed decision.

Once Stage 1 applications are submitted we carry out a number of checks on your application. Further information on this process can be found as part of the **Checks We Carry Out on your application** guidance document published on our Research Grant Programme website page.

Decision Timeframe

We aim to respond to all Stage One applications within four weeks.

A member of our Grants to Charities and Organisations Grant Team will be in touch to inform you about the outcome, and if appropriate issue you with Stage Two Application form. These will ask you to expand on the information provided as part of Stage One, and include requests for additional documentation.

Depending on the size and nature of your application, we may contact you to gather further information, or even to request a visit to your premises. We are keen to work closely with grant applicants to work out how we can best support their needs.

The time taken to assess an application will vary depending on the amount of funding requested. All decisions to award grant-funding are made by dedicated sub-committees, and your application will be tabled at the next available opportunity once checks have been completed. Applications for grant-funding of less than £1 million are assessed by a sub-committee that meets on a monthly basis. Applications for grant-funding of more than £1 million are assessed by a sub-committee that meets quarterly.

Once your Stage Two application is received, a member of our Grants to Charities and Organisations Team will be in touch to let you know when your application is likely to be assessed.

How to apply

Our Stage One Application form can be found on the [Motability Wheelchair Sector Grants Programme website page](#). The form includes a checklist of our qualification criteria, please ensure that you meet these before submitting your application.

All applications to this programme must be for funding that relates to Wheelchair Sector and supporting the transport needs of disabled people.

Please send all completed applications, accompanied by the requested supporting documentation, to **GrantsToOrganisations@motability.org.uk**

If you have any questions about the application process, or about the programme more widely, please get in touch using our online form on the [Motability Wheelchair Sector Grant Programme website page](#).

If you receive a grant

When Motability contact you to let you know that your application has been successful, we will also include a copy of our Standard Grant Agreement for signature. The terms of this agreement can be found on the [Motability Wheelchair Sector Grant Programme website page](#). Please consider whether you are able to comply with these general terms before applying for a grant, as Motability are unable to vary them on a per-grant basis.

As part of your Stage Two application, we will have worked with you to establish a standard set of measures against which we can monitor the grant, and a schedule for reporting back. We want to make the monitoring process as straightforward as possible for all grantees, while also ensuring we collect enough information about the difference you are making for disabled people.

Once the grant agreement has been signed we will pass on your details to our Finance Team, and ask you to submit a Request for Payment form directly to them. Once received your grant payment should be with you within a few days.

Reapplication

When thinking about reapplying, you should carefully consider the feedback we provided about why you were not successful this time. It is very unlikely that our decision will be different if you have not made any changes to your application, or your charity or organisation.

We ask charities and organisations that have not been successful with their applications to not reapply for a period of three months from the date of our decision. This is to provide you with an opportunity to consider our feedback, and to minimise the potential for wasted resource on all sides.

Motability will not generally award concurrent grants to a single organisation. If you are already in receipt of a grant, and believe you can further support the transport needs of disabled people, then please contact the member of our Grant Manager that handled your initial application.



**GrantsToOrganisations
@motability.org.uk**

More information on our
Wheelchair Sector Grants
can be found **here**

Motability, Warwick House, Roydon Road,
Harlow, Essex CM19 5PX

Website: **motability.org.uk**

Motability is a Registered Charity in England and Wales
(Number 299745) and a Registered Charity in Scotland
(Number SC050642) and is authorised and regulated by the
Financial Conduct Authority (Reference number 736309).