

Grants to Charities and  
Organisations

# Research Grant Programme

Guidance for Applicants

## Introduction to Motability

Motability are a national charity that support the transport needs of disabled people. Our vision is that no disabled person shall be disadvantaged due to poor access to transportation.

Set up in 1977 Motability has been supporting disabled people with their transportation needs for more than 45 years.

In 2022 we are launching six new grant programmes to provide even more support to other charities and organisations in areas where our research and insight has shown opportunities to have the greatest impact for disabled people.

We are using £50million of the donation we received in 2021 to expand our support for charities and other organisations for the next three financial years ending March 2025.

Our new grant programmes have been designed to provide even more support to other charities and organisations. They will help to address the challenges that disabled people face accessing transport right now, while Motability continues its research and innovation work into longer-term solutions to make all transport accessible.

The first two new grant programmes, Community Transport, and Wheelchair Sector launched on 1 April 2022 with the Research Grants and Active Travel Grants launching in June 2022. The remaining programmes will launch throughout the year. More information on these programmes will be provided when available.

Motability is committed to our vision, that no disabled person shall be disadvantaged due to poor access to transportation. This includes all disabled people in need of assistance with their personal transportation, not just disabled people who choose to use the Motability Scheme.

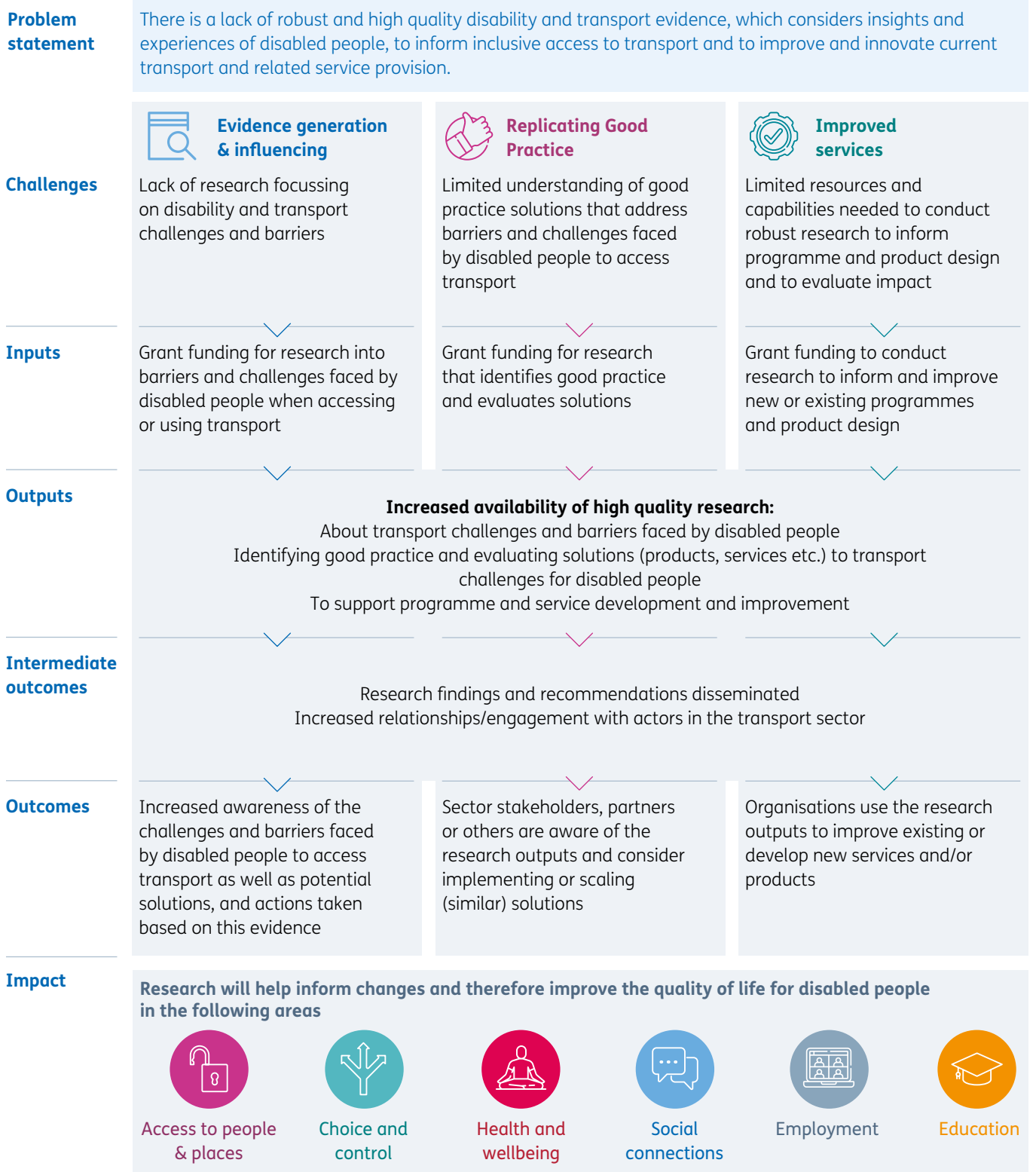
## About this programme

Through this new grant programme we hope to help charities and organisations to undertake research to help us better understand the problems that disabled people face in the transport system and to how they can be solved.

Through an extensive programme of research and engagement, Motability have identified three **Routes to Impact** in the research sector which we are seeking to support with grant funding. The framework below identifies these Routes to Impact, and outlines how improvements in these areas can benefit disabled people.



# Research Grant Programme Routes to Impact



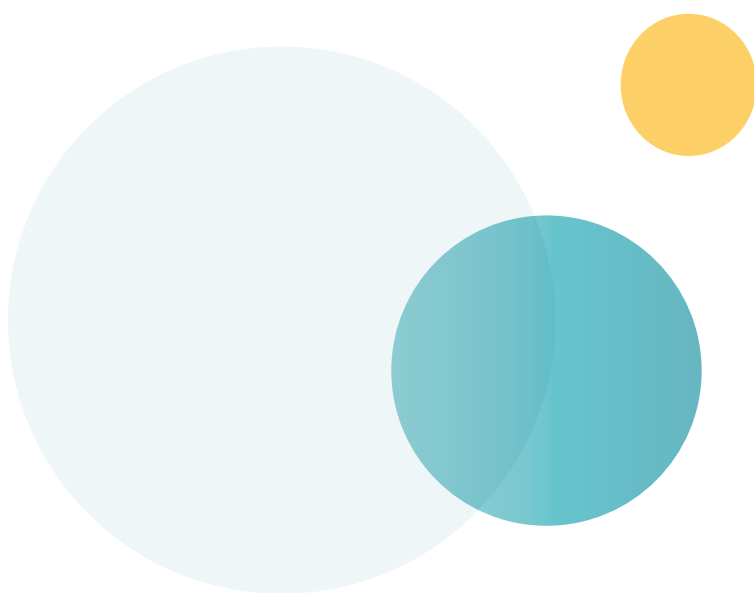
The above diagram explains Motability’s key outcomes of the Research Grant Programme. For further details please see below.

We believe that research in these areas has the greatest chance of delivering meaningful change for disabled people, and supporting Motability's key outcomes of:

- **Access** – Increased ability to access people and places using transport
- **Choice and Control** – Improved independence and control to make decisions
- **Connect** – Increased social connections and relationships
- **Education** – Increased ability to access education and training
- **Work** – Increased ability to work and pursue a career
- **Wellbeing** – Improved sense of health and wellbeing

These Routes to Impact have been developed following an extensive programme of research and stakeholder engagement across the sector. Grant-funding available through this programme will focus on these areas. If you are considering submitting an application for funding that seeks to deliver research in other ways then it is unlikely to be supported.

If you have any questions then please contact a member of the team via the [Research Grant Programme page of our website](#).



# What funding is available?

Motability has announced its intention to award £50 million in Grants to Charities and Organisations over the next three years. A portion of this has been allocated to the Research Grant Programme.

**Grant Value** – The minimum grant value for this programme is £50,000, and the maximum grant value is £1,000,000. This can be split over one, two or three years. For example you may apply for £51,000 in total over three years which would be £17,000 per annum.

Please note that the final date for grant payments is the conclusion of the three year funding period on 31 March 2025. Requests for funding with payment date/s after this point will generally not be accepted.

## What can be funded?

- Full cost recovery grants
- Research work which fits within the three routes to impact.
- Staff Costs to undertake research or evaluation
- Revenue costs to support the research or evaluation
- Costs to engage the skills of an independent research or evaluation organisation
- Partnership working. The lead applicant should be a charity who meets this criteria however funding can be shared between partners

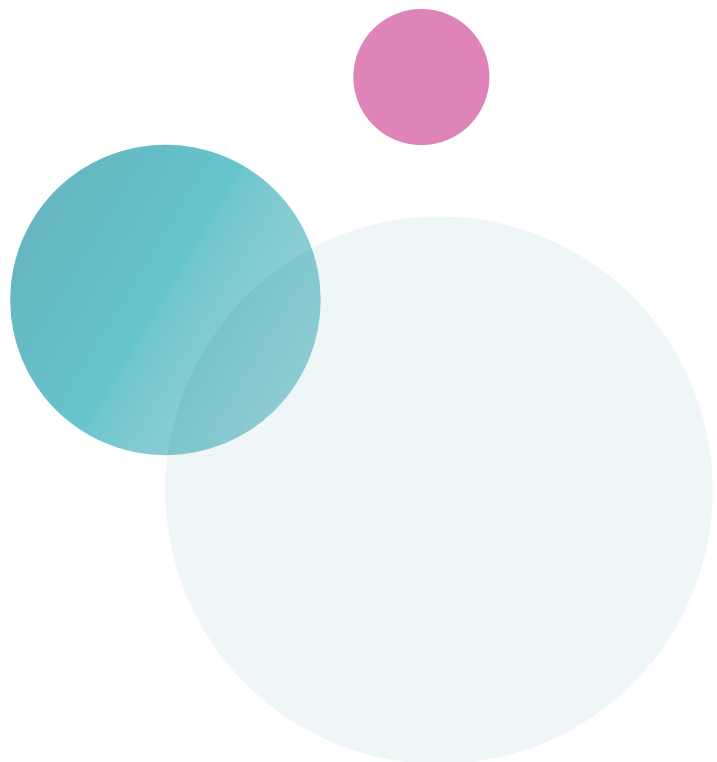
Priority will be given to organisations who:

- Evidence a clear need for the area of research
- Use creative, ethical, and appropriate research methods
- Provide a good value for money
- Have a plan to share research, whatever the outcome, after the project is complete

## Examples of work has been funded or may be funded under this programme

- A grant was awarded to look at independent journeys taken by people with sight loss, the challenges during these journeys and the fundamental changes which could be made to improve the experience.
- A grant could be awarded to evaluate the work you are currently running in order to scale up provision or evidence need for to upscale work nationally.
- A grant was awarded to help understand the end-to-end experience of disabled people when travelling by taxi.
- A grant could be awarded to look at the challenges and solutions of disabled people in rural communities.

Motability are willing to support proposals seeking match-funding for an activity or service that supports disabled people, however for the sake of simplicity it is recommended that your application be limited to an area that can be supported in its entirety by Motability.

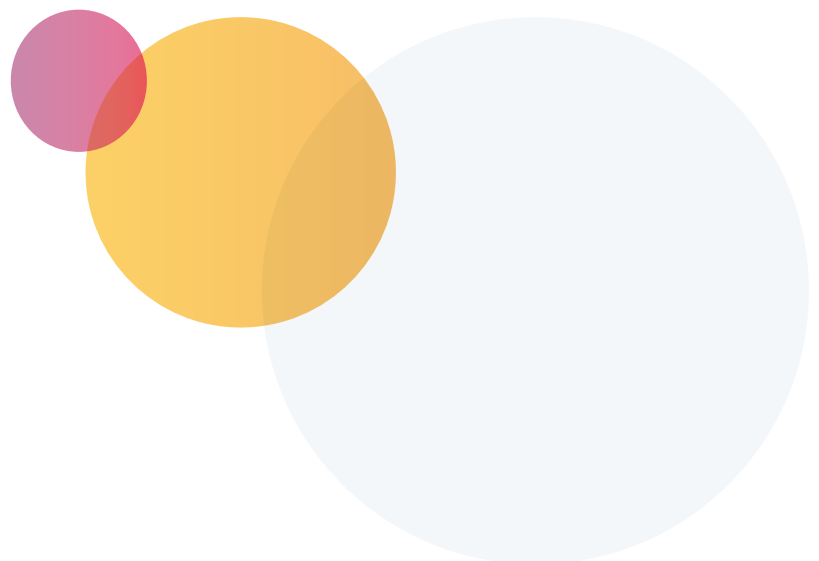


## Who can apply?

Motability wants to support medium or large charities and organisations with well-established ways of working. This includes academic organisations which are charitable in nature.

We ask that Applicant organisations meet the following criteria:

- You are an incorporated organisation, overseen by, and subject to the rules of a regulator such as the Charity Commission, Companies House, or Office for Students. Organisations should have a charitable purpose and undertaking research to support disabled people with their transport needs.
- You have been active for at least three years.
- You have had an annual income of at least £150,000 per annum over the last three years.
- You hold reserves equivalent to at least three months of operating costs. Motability will not generally award a Grant to Charities or Organisations holding more than 12 months of operating expenditure in reserves.



# What cannot be funded?

While Motability aim to support as wide a range of applications as possible within this space, there are some things we are not able to award grant-funding for. These include:

- Grants to statutory bodies, hospitals, or health authorities. Grants are also not available to charities and organisations based, or solely working outside of the UK.
- Grants to political pressure groups, or organisations primarily engaged in political activity.
- Grants to projects or services that proselytise a specific ethical or religious belief, and/or charities and organisations that exclude individuals that do not hold a specific ethical or religious belief.
- Construction projects and/or building works
- Social investment or venture philanthropy
- Retrospective funding of services or activities
- Sponsorship for any individual, group, or company
- Overseas travel
- Medical care or medical research
- Applications for activities or services unrelated to transport for disabled people cannot be supported by Motability.



# How do we assess applications?

Motability has a two-stage application process for all Grants to Charities and Organisations. Having spoken to both grant-makers and grant-recipients across the charity sector we recognise the enormous commitment of time and resource associated with applying for grant-funding.

Motability's application process is designed to minimise the effort of applying for grant-funding as much as possible, while ensuring that we gather the information we need to make an informed decision.

Once Stage 1 applications are submitted we carry out a number of checks on your application. Further information on this process can be found as part of the **Checks We Carry Out on your application** guidance document published on our Research Grant Programme website page.

## Decision Timeframe

We aim to respond to all Stage One applications within four weeks.

A member of our Grants to Charities and Organisations Team will be in touch to inform you about the outcome, and if appropriate issue you with Stage Two Application form. These will ask you to expand on the information provided as part of Stage One, and include requests for additional documentation.

Depending on the size and nature of your application, we may contact you to gather further information, or even to request a visit to your premises. We are keen to work closely with grant applicants to work out how we can best support their needs.

The time taken to assess an application will vary depending on the amount of funding requested. All decisions to award grant-funding are made by dedicated sub-committees, and your application will be tabled at the next available opportunity once checks have been completed. Applications for grant-funding of less than £1 million are assessed by a sub-committee that meets on a monthly basis. Applications for grant-funding of more than £1 million are assessed by a sub-committee that meets quarterly.

Once your Stage Two application is received, a member of our Grants to Charities and Organisations Team will be in touch to let you know when your application is likely to be assessed.

# How to apply

Our Stage One Application form can be found on the Motability Research Grant Programme website page. The form includes a checklist of our qualification criteria, please ensure that you meet these before submitting your application.

All applications to this programme must be for funding that relates to research on transport and the needs of disabled people.

Please send all completed applications, accompanied by the requested supporting documentation, to **GrantsToOrganisations@motability.org.uk**

If you have any questions about the application process, or about the programme more widely, please get in touch using our online form on the Motability Research Grant Programme website page.

## If you receive a grant

When Motability contact you to let you know that your application has been successful, we will also include a copy of our Standard Grant Agreement for signature. The terms of this agreement can be found on the Motability Research Grant Programme website page. Please consider whether you are able to comply with these general terms before applying for a grant, as Motability are unable to vary them on a per-grant basis.

As part of your Stage Two application, we will have worked with you to establish a standard set of measures against which we can monitor the grant, and a schedule for reporting back. We want to make the monitoring process as straightforward as possible for all grantees, while also ensuring we collect enough information about the difference you are making for disabled people.

Once the grant agreement has been signed we will pass on your details to our Finance Team, and ask you to submit a Request for Payment form directly to them. Once received your grant payment should be with you within a few days.

## Reapplication

When thinking about reapplying, you should carefully consider the feedback we provided about why you were not successful this time. It is very unlikely that our decision will be different if you have not made any changes to your application, or your charity or organisation.

We ask charities and organisations that have not been successful with their applications to not reapply for a period of three months from the date of our decision. This is to provide you with an opportunity to consider our feedback, and to minimise the potential for wasted resource on all sides.

Motability will not generally award concurrent grants to a single organisation. If you are already in receipt of a grant, and believe you can further support the transport needs of disabled people, then please contact the Grant Manager that handled your initial application.



**GrantsToOrganisations  
@motability.org.uk**

More information on  
our Research Grants can  
be found **here**

Motability, Warwick House, Roydon Road,  
Harlow, Essex CM19 5PX

Website: **motability.org.uk**

Motability is a Registered Charity in England and Wales  
(Number 299745) and a Registered Charity in Scotland  
(Number SC050642) and is authorised and regulated by the  
Financial Conduct Authority (Reference number 736309).